

Centennial Crossing

The Alcott

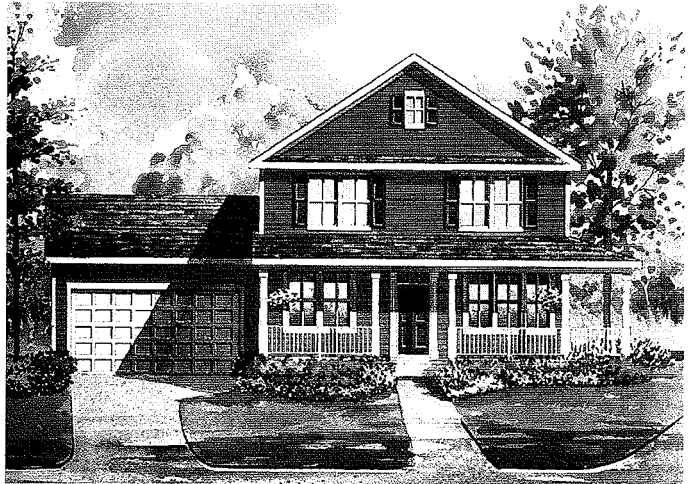
2,746 SF



CLASSICAL



COLONIAL REVIVAL
(Standard elevation)



AMERICAN FARMHOUSE



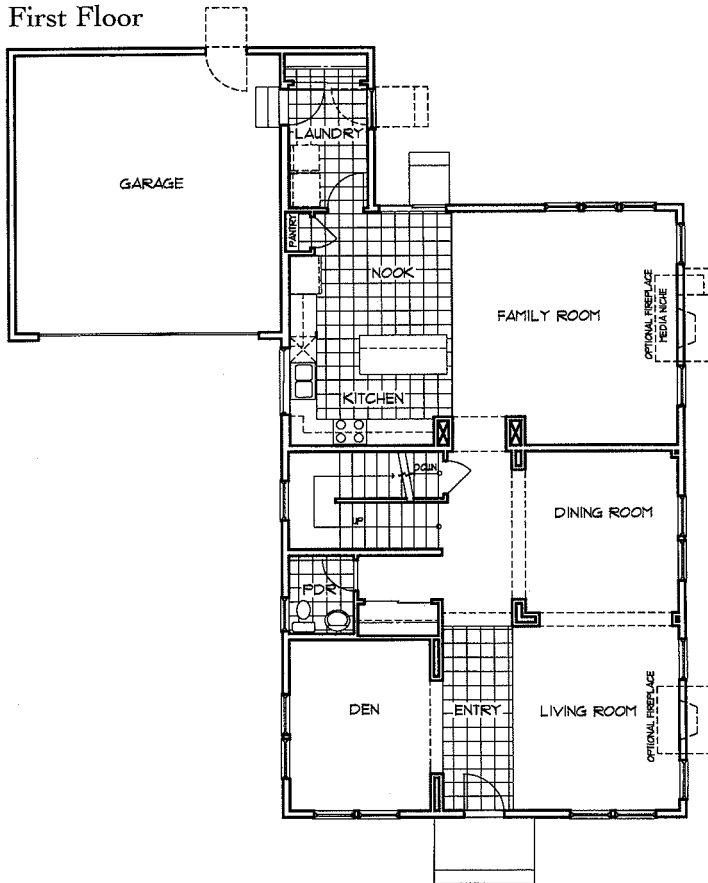
FRENCH

Centennial Crossing

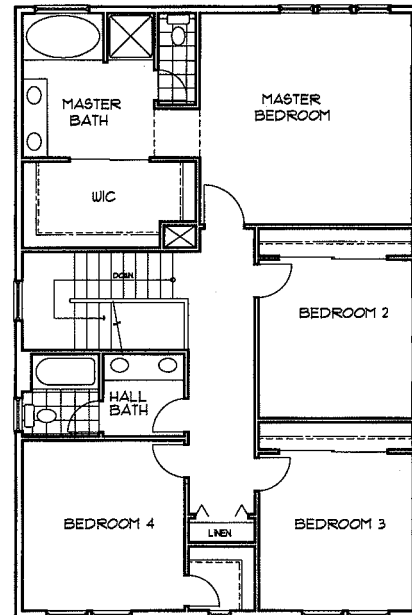
The Alcott

2,746 SF • 65' street-loaded homesites

First Floor



Second Floor



A two-story home featuring four bedrooms plus den or optional fifth bedroom, 2 1/2 or three full baths, partial basement, and attached street-loaded two-car garage.

1st Floor Features

- Front entry foyer
- Living room
- Dining room
- Kitchen with island counter, breakfast nook and pantry
- Family room
- Den
- Powder room
- Laundry room
- 9' first floor ceilings

2nd Floor Features

- Master suite with ultra bath and oversize walk-in closet
- Three additional bedrooms with oversize closets
- Full hall bath with double-bowl vanity, private tub and water closet
- Hall linen closet

Optional Features

- Gourmet kitchen
- Living room fireplace
- Family room fireplace
- Family room fireplace with built-in media niche
- Guest bedroom and full bath (in lieu of den and powder room)
- Master suite retreat (in lieu of bedroom 2)
- Master suite volume ceiling (per elevation)
- Full and finished basement options

In an effort to continuously improve our product, Town & Country Homes reserves the right to change floorplans and elevation specifications when necessary. All renderings, floorplans and maps are artist's conceptions and are not intended to be an exact depiction of either the homes or landscaping.