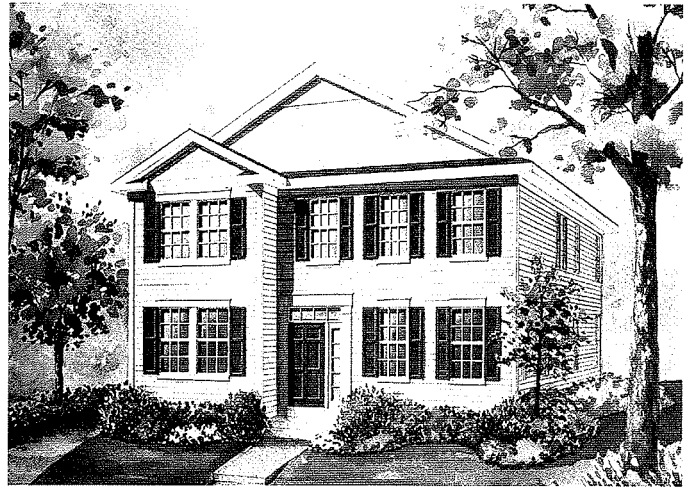


Centennial Crossing

The Emerson

2,402 SF

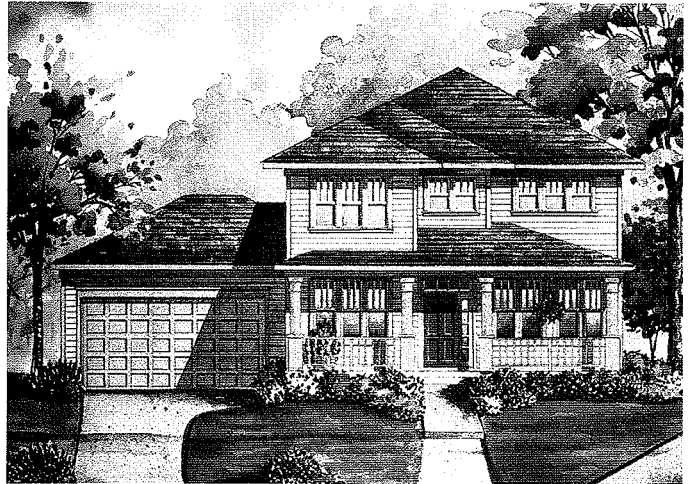
CLASSICAL
(Standard elevation)



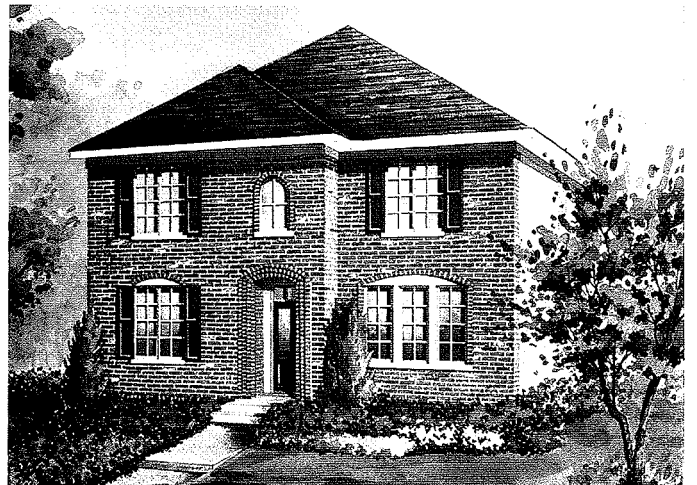
COLONIAL REVIVAL



PRAIRIE



FRENCH

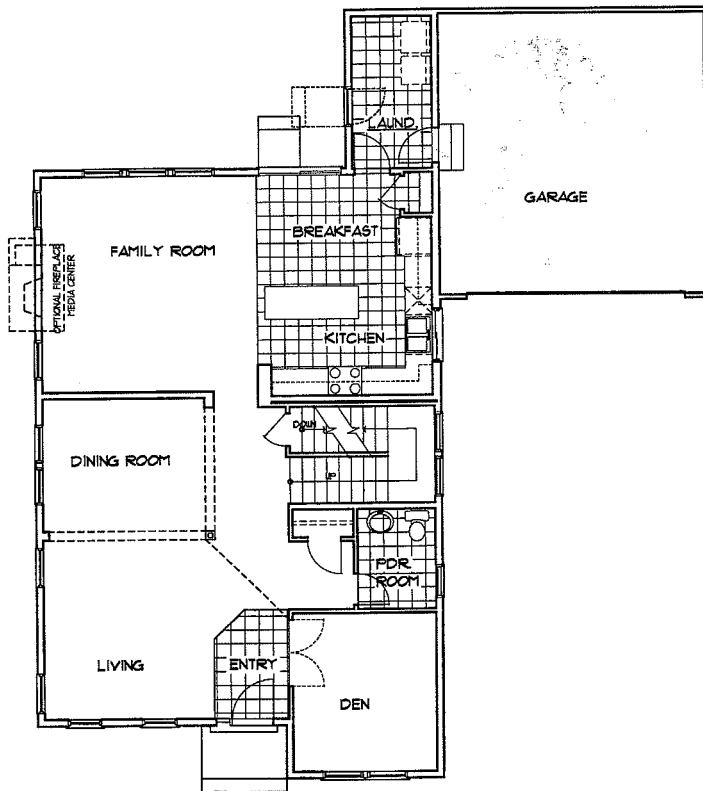


Centennial Crossing

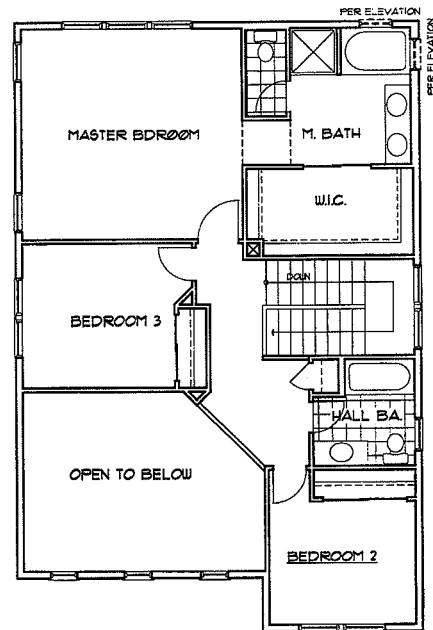
The Emerson

2,402 SF • 65' street-loaded homesites

First Floor



Second Floor



A two-story home featuring three bedrooms plus den or optional fourth bedroom, 2 1/2 or three baths, partial basement, and attached street-loaded two-car garage.

1st Floor Features

- Living room with volume ceiling
- Dining room
- Kitchen with island counter, breakfast nook and pantry
- Family room
- Den with optional double-door entry
- Powder room
- Laundry room
- 9' first floor ceilings

2nd Floor Features

- Master suite with ultra bath and oversize walk-in closet
- Two additional bedrooms
- Full hall bath

Optional Features

- Gourmet kitchen
- Family room fireplace
- Family room fireplace with built-in media niche
- Guest bedroom and full bath (in lieu of den and powder room)

- Master suite retreat (in lieu of bedroom 3)
- Master suite volume ceiling (per elevation)
- Loft living area (in lieu of bedroom 3)
- Full and finished basement options
- Porte cochere with separate side entry

In an effort to continuously improve our product, Town & Country Homes reserves the right to change floorplans and elevation specifications when necessary. All renderings, floorplans and maps are artist's conceptions and are not intended to be an exact depiction of either the homes or landscaping.