

Centennial Crossing

The Faulkner

2,711 SF

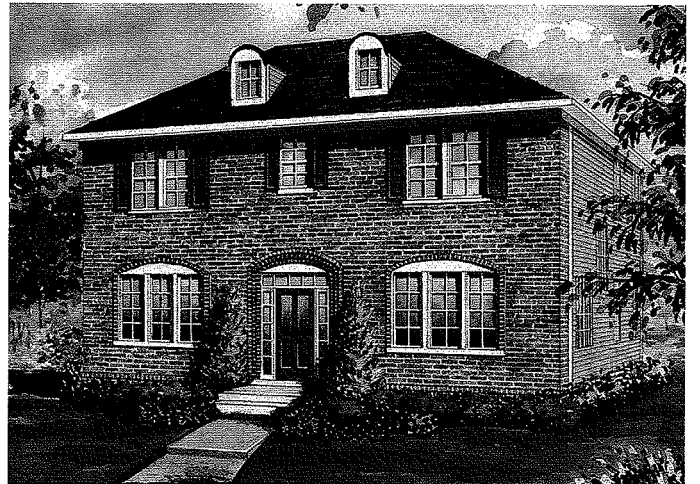
AMERICAN FARMHOUSE
(Standard elevation)



VICTORIAN



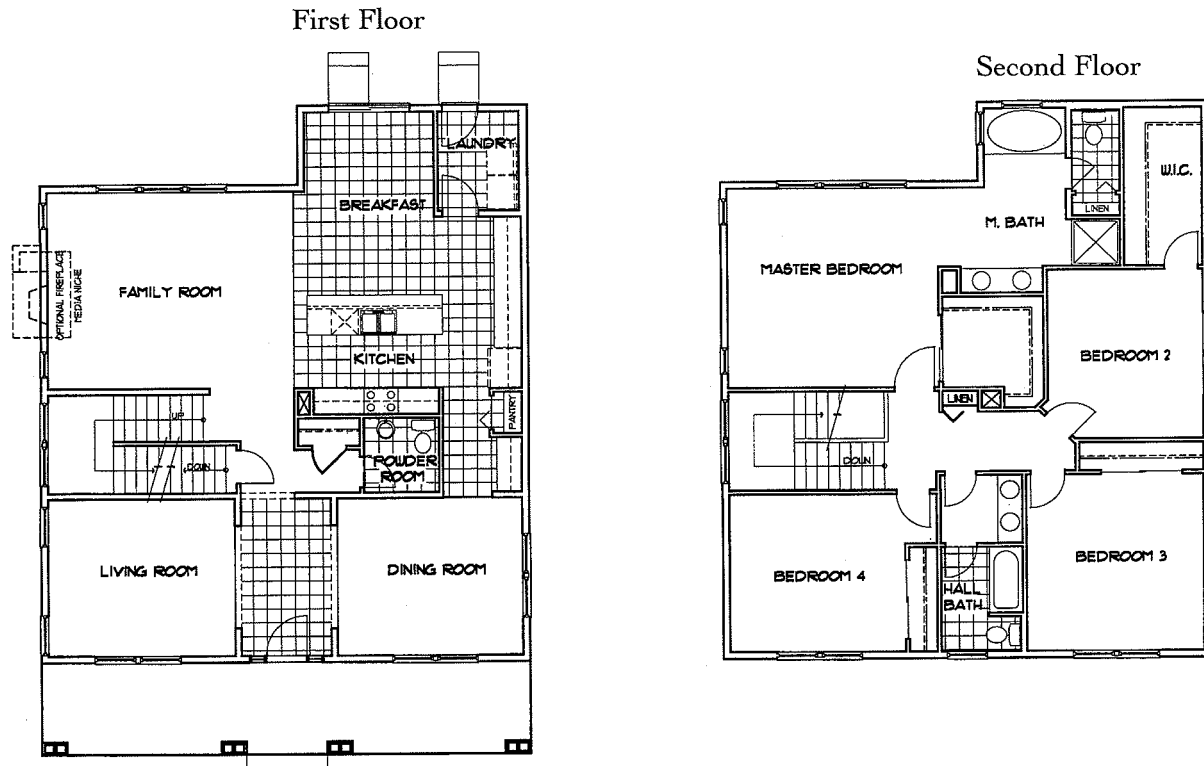
FRENCH



Centennial Crossing

The Faulkner

2,711 SF • 55' alley-loaded or 65' street-loaded homesites



A two-story home featuring four bedrooms, 2 1/2 or 3 1/2 baths, partial basement, and detached alley-loaded two-car garage.

1st Floor Features

- Front entry foyer
- Formal living room
- Formal dining room with butler's pantry
- Kitchen with work island, breakfast nook and pantry
- Family room
- Powder room
- Laundry room
- 9' first floor ceilings

2nd Floor Features

- Master suite with ultra bath, and oversize walk-in closet
- Additional bedroom with walk-in closet
- Two front bedrooms
- Full hall bath with double-bowl vanity, private tub and water closet

Optional Features

- Gourmet kitchen
- Family room fireplace
- Family room fireplace with built-in media niche

- Bedroom 2 with private bath (in lieu of walk-in closet)
- Master bedroom volume ceiling (per elevation)
- Full and finished basement options
- Porte cochere with additional side entry (per homesite)
- Garage breezeway and porch options (see separate insert)
- Three-car garage (per homesite)

In an effort to continuously improve our product, Town & Country Homes reserves the right to change floorplans and elevation specifications when necessary. All renderings, floorplans and maps are artist's conceptions and are not intended to be an exact depiction of either the homes or landscaping.