

Centennial Crossing

# The Fitzgerald

3,221 SF

AMERICAN FARMHOUSE  
(Standard elevation)



CLASSICAL



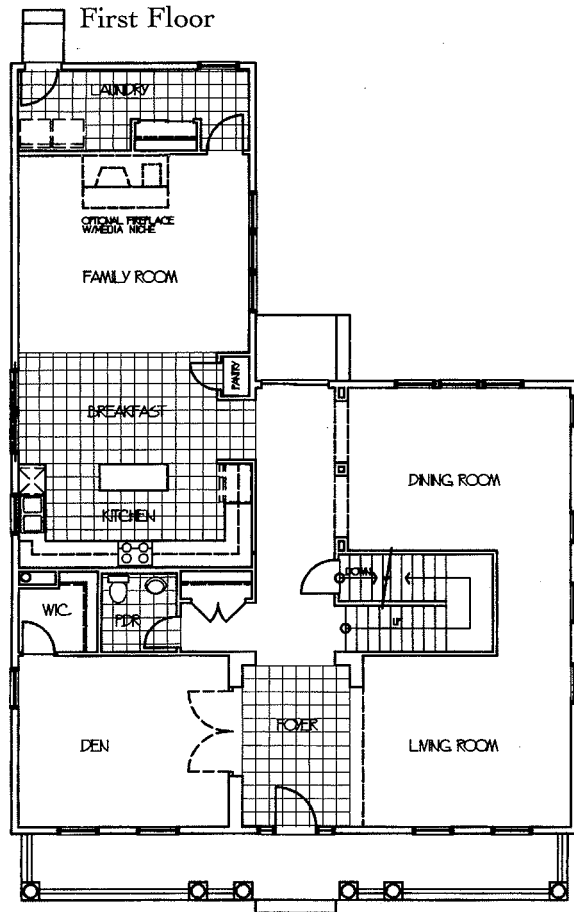
PRAIRIE



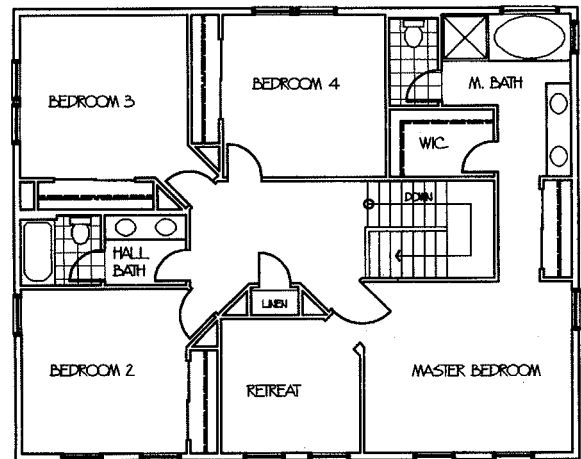
Centennial Crossing

# The Fitzgerald

3,221 SF • 65' alley-loaded homesites



Second Floor



A two-story home featuring four bedrooms, retreat, plus den or optional fifth bedroom, 2 1/2 or three full baths, partial basement, and detached alley-loaded two-car garage.

### 1st Floor Features

- Front entry foyer
- Formal living room
- Formal dining room
- Kitchen with island counter, breakfast nook and pantry
- Family room
- Den with optional double-door entry and walk-in closet
- Powder room
- Laundry room with closet
- 9' first floor ceilings

### 2nd Floor Features

- Master suite with private retreat, ultra bath, walk-in closet and wardrobe closet
- Three additional bedrooms
- Full hall bath with double-bowl vanity, private tub and water closet
- Hall linen closet

### Optional Features

- Gourmet kitchen
- Family room fireplace
- Family room fireplace with entertainment niche

- Family room fireplace with entertainment center
- Family room volume ceiling
- Guest bedroom and dual entry full bath (in lieu of den and powder room)
- Master suite volume ceiling (per elevation)
- Full and finished basement options
- Garage breezeway and porch options (see separate insert)
- Three-car garage (per homesite)

In an effort to continuously improve our product, Town & Country Homes reserves the right to change floorplans and elevation specifications when necessary. All renderings, floorplans and maps are artist's conceptions and are not intended to be an exact depiction of either the homes or landscaping.