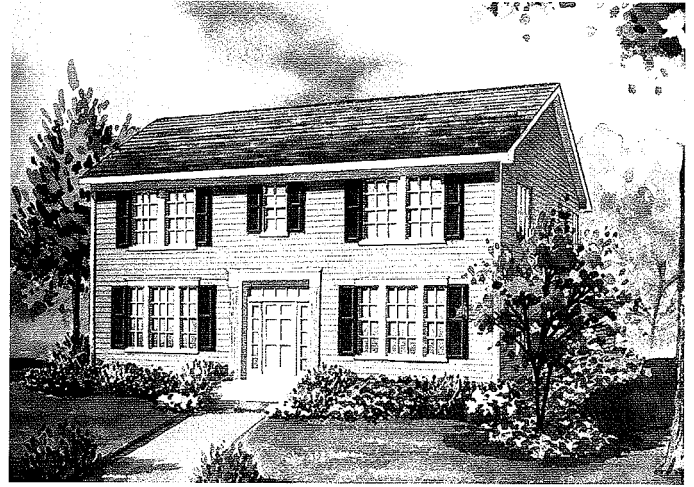


Centennial Crossing

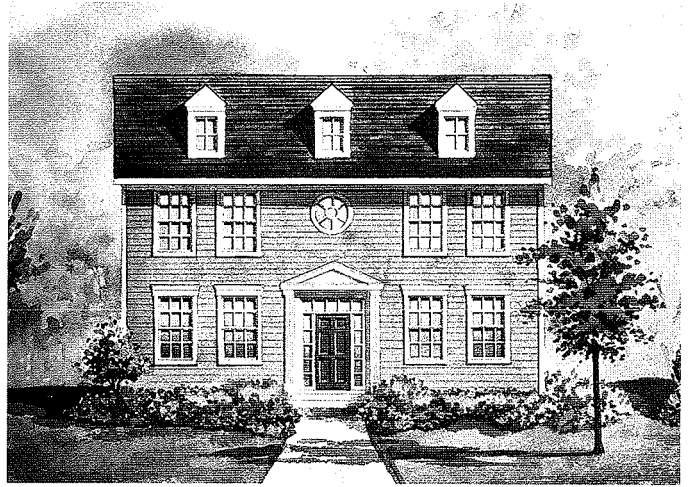
# The Hawthorne

2,470 SF

COLONIAL REVIVAL  
(Standard elevation)



CLASSICAL



FRENCH



AMERICAN FOUR-SQUARE

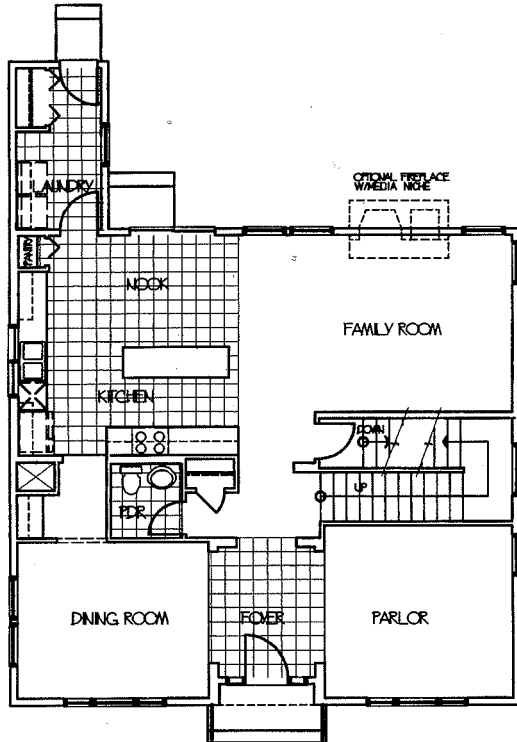


Centennial Crossing

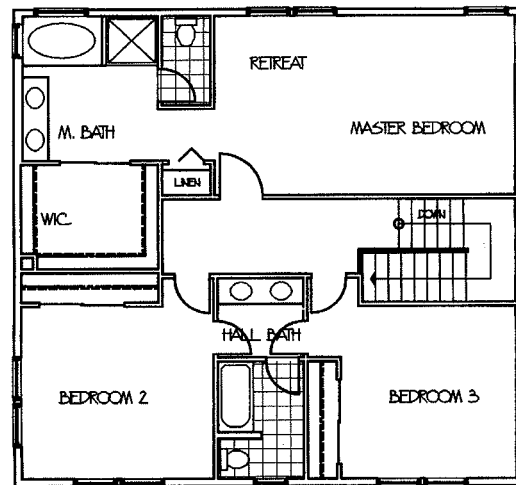
# The Hawthorne

2,470 SF • 55' alley-loaded or 65' street-loaded homesites

First Floor



Second Floor



A two-story home featuring three or four bedrooms, 2 1/2 baths, partial basement, and detached alley-loaded two-car garage.

### 1st Floor Features

- Front entry foyer
- Formal living room
- Formal dining room with butler's pantry
- Kitchen with island counter, breakfast nook and pantry
- Family room
- Powder room
- Laundry room with closet
- 9' first floor ceilings

### 2nd Floor Features

- Master suite with sitting retreat, ultra bath, oversize walk-in closet and linen closet
- Two additional bedrooms with private bath entries
- Dual entry hall bath with double-bowl vanity, private tub and water closet

### Optional Features

- Gourmet kitchen
- Family room fireplace
- Family room fireplace with built-in media niche

- Additional bedroom (in lieu of master retreat)
- Master suite volume ceiling (per elevation)
- Full and finished basement options
- Porte cochere with additional side entry (per homesite)
- Garage breezeway and porch options (see separate insert)
- Three-car garage (per homesite)

*In an effort to continuously improve our product, Town & Country Homes reserves the right to change floorplans and elevation specifications when necessary. All renderings, floorplans and maps are artist's conceptions and are not intended to be an exact depiction of either the homes or landscaping.*