

Centennial Crossing

The Hemingway

3,703 SF

AMERICAN FARMHOUSE
(Standard elevation)



CRAFTSMAN



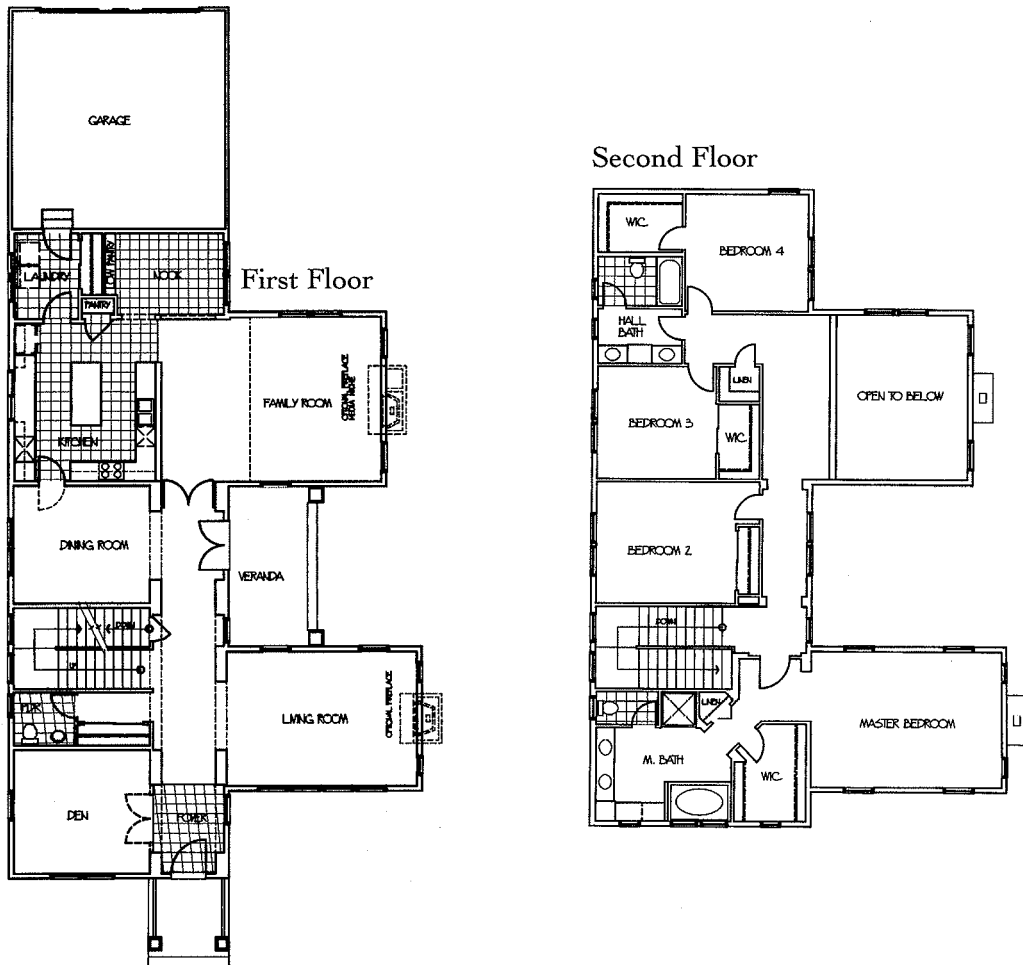
VICTORIAN



Centennial Crossing

The Hemingway

3,703 SF • 65' alley-loaded homesites



A two-story home featuring four bedrooms plus den or optional fifth bedroom, 2 1/2 or three full baths, private veranda, partial basement, and attached alley-loaded two-car garage.

1st Floor Features

- Extended front foyer/hallway with double-door entry to veranda
- Formal living room
- Formal dining room
- Kitchen with island counter, breakfast nook and pantry
- Family room with volume ceiling
- Den with optional double-door entry
- Powder room
- Laundry room with closet
- Covered veranda
- 9' first floor ceilings

2nd Floor Features

- Master suite with ultra bath and oversize walk-in closet
- Additional bedroom with wardrobe closet
- Two additional bedrooms with walk-in closets
- Full hall bath with double-bowl vanity, private tub and water closet
- Grand hallway with sitting nook overlooking family room
- Walk-in hall linen closet

Optional Features

- Gourmet kitchen
- Living room French doors to oversize front porch (per elevation)
- Living room fireplace
- Family room fireplace
- Family room fireplace with built-in media niche
- Master bedroom volume ceiling (per elevation)
- Guest bedroom and full bath (in lieu of den and powder room)
- Full and finished basement options

In an effort to continuously improve our product, Town e3 Country Homes reserves the right to change floorplans and elevation specifications when necessary. All renderings, floorplans and maps are artist's conceptions and are not intended to be an exact depiction of either the homes or landscaping.