

*Centennial Crossing*

# *The Melville*

3,215 SF

CLASSICAL  
(Standard elevation)



AMERICAN FOUR SQUARE



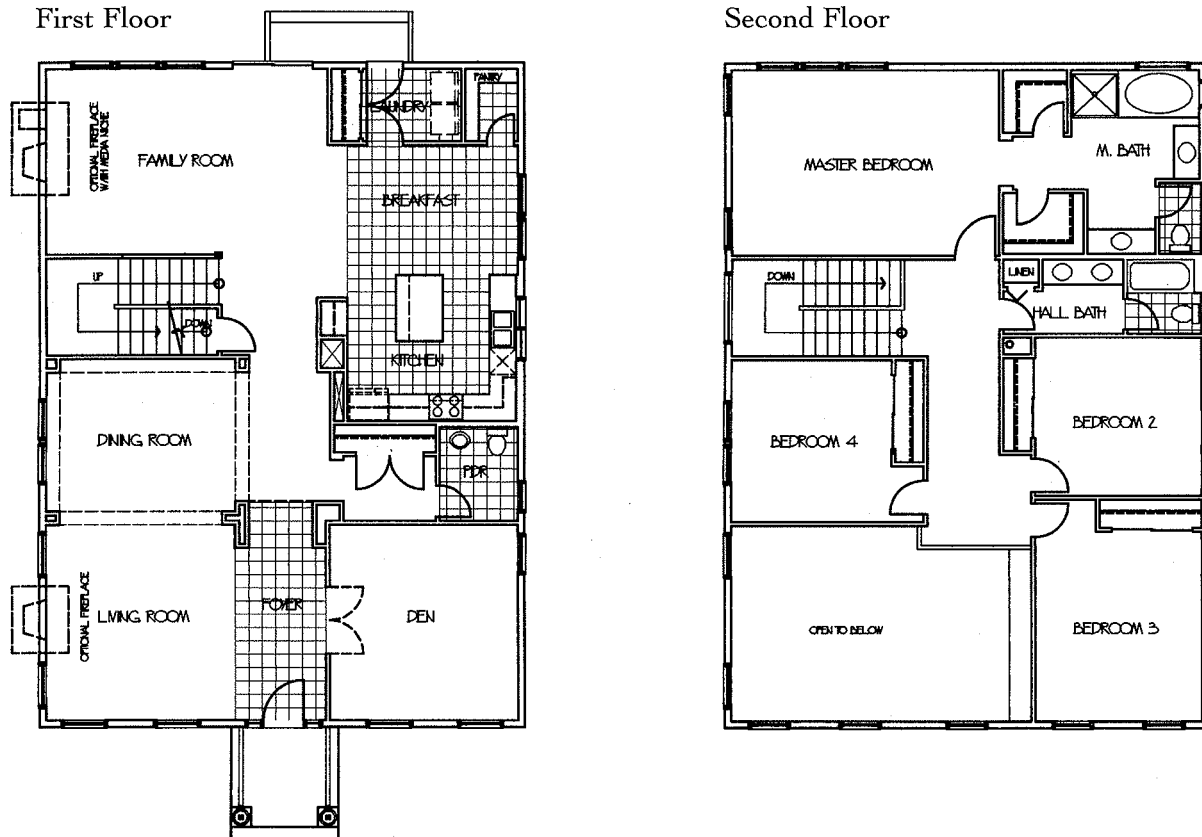
VICTORIAN



Centennial Crossing

# The Melville

3,215 SF • 55' alley-loaded or 65' street-loaded homesites



A two-story home featuring four bedrooms plus den or optional fifth bedroom, 2 1/2 or three full baths, partial basement, and detached alley-loaded two-car garage.

## 1st Floor Features

- Entry foyer with volume ceiling
- Living room with volume ceiling
- Dining room
- Kitchen with island counter, breakfast nook and walk-in pantry
- Family room
- Den with optional double-door entry
- Powder room
- Laundry room
- 9' first floor ceilings

## 2nd Floor Features

- Master suite with ultra bath and two walk-in closets
- Three additional bedrooms
- Full hall bath with linen closet, double-bowl vanity, private tub and water closet

## Optional Features

- Gourmet kitchen
- Living room fireplace
- Family room fireplace
- Family room fireplace with built-in media niche

- Guest bedroom and full bath (in lieu of den and powder room)
- Master suite volume ceiling (per elevation)
- Loft living area (in lieu of bedroom 4)
- Full and finished basement options
- Porte cochere with additional side entry (per homesite)
- Garage breezeway and porch options (see separate insert)
- Three-car garage (per homesite)

*In an effort to continuously improve our product, Town & Country Homes reserves the right to change floorplans and elevation specifications when necessary. All renderings, floorplans and maps are artist's conceptions and are not intended to be an exact depiction of either the homes or landscaping.*