

Centennial Crossing

The Sandburg

3,239 SF

CRAFTSMAN
(Standard elevation)



VICTORIAN



PRAIRIE



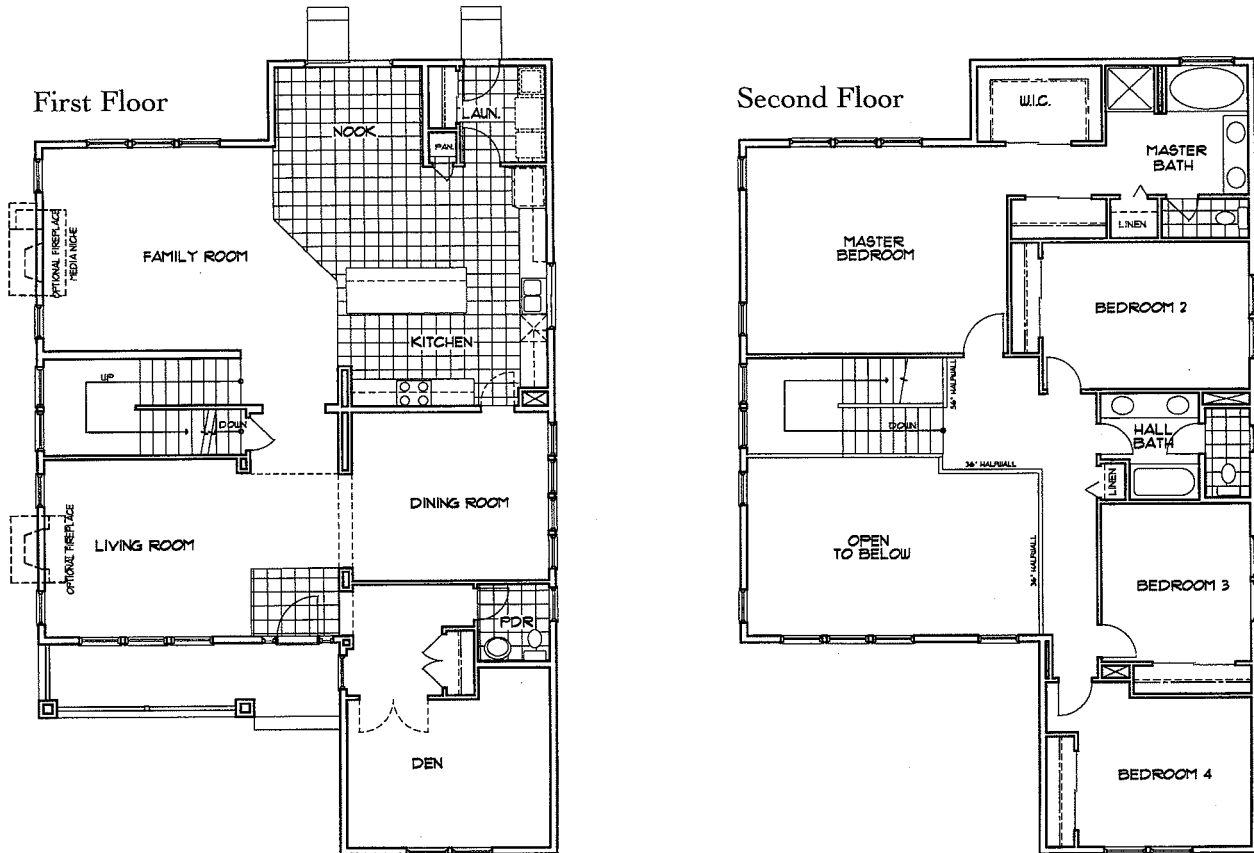
AMERICAN FARMHOUSE



Centennial Crossing

The Sandburg

3,239 SF • 55' alley-loaded or 65' street-loaded homesites



A two-story home featuring four bedrooms plus den or optional fifth bedroom, 2 1/2 or three full baths, partial basement, and detached alley-loaded two-car garage.

1st Floor Features

- Living room with volume ceiling
- Formal dining room
- Country kitchen with island counter, breakfast nook and pantry
- Family room
- Den with optional double-door entry
- Powder room
- Laundry room with closet
- 9' first floor ceilings

2nd Floor Features

- Master suite with ultra bath, walk-in closet and wardrobe closet
- Three additional bedrooms
- Full hall bath with double-bowl vanity and private water closet
- Stair landing sitting area
- Hall linen closet

Optional Features

- Gourmet kitchen
- Living room fireplace
- Family room fireplace
- Family room fireplace with built-in media niche

- Guest bedroom and full bath (in lieu of den and powder room)
- Master suite retreat (in lieu of bedroom 2)
- Master bedroom volume ceiling (per elevation)
- Second floor family room (in lieu of bedroom 2)
- Full and finished basement options
- Porte cochere with additional side entry (per homesite)
- Garage breezeway and porch options (see separate insert)
- Three-car garage (per homesite)

In an effort to continuously improve our product, Town & Country Homes reserves the right to change floorplans and elevation specifications when necessary. All renderings, floorplans and maps are artist's conceptions and are not intended to be an exact depiction of either the homes or landscaping.