

Centennial Crossing

The Steinbeck

3,300 SF

COLONIAL REVIVAL
(Standard elevation)



AMERICAN FARMHOUSE



CLASSICAL

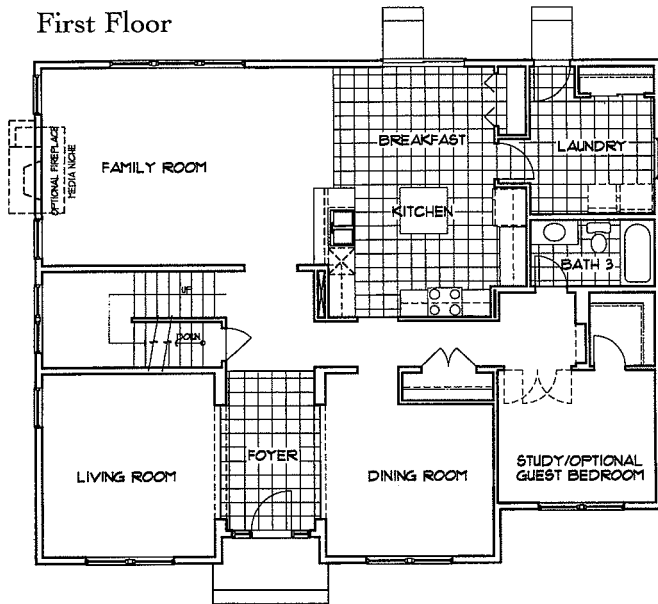


Centennial Crossing

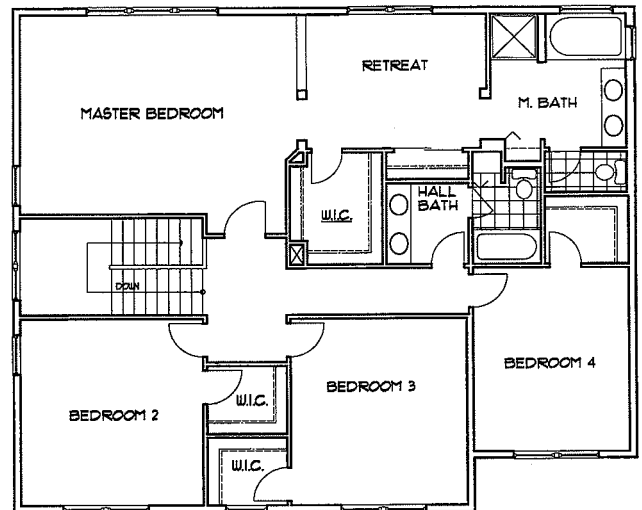
The Steinbeck

3,300 SF • 65' alley-loaded homesites

First Floor



Second Floor



A two-story home featuring four bedrooms plus study or optional fifth bedroom, three full baths, partial basement, and detached alley-loaded two-car garage.

1st Floor Features

- Front entry foyer
- Formal living room
- Formal dining room
- Kitchen with island counter, breakfast nook and pantry
- Family room
- Study with optional double-door entry and walk-in closet
- Full bath
- Oversize laundry room with closet
- 9' first floor ceilings

2nd Floor Features

- Master suite with sitting retreat, ultra bath, walk-in closet, wardrobe closet and linen closet
- Three additional bedrooms with walk-in closets
- Full hall bath with double-bowl vanity, private tub, water closet and linen closet

Optional Features

- Gourmet kitchen
- Family room fireplace
- Family room fireplace with built-in media niche
- Guest bedroom (in lieu of study)
- Master suite volume ceiling (per elevation)
- Full and finished basement options
- Garage breezeway and porch options (see separate insert)
- Three-car garage (per homesite)

In an effort to continuously improve our product, Town e3 Country Homes reserves the right to change floorplans and elevation specifications when necessary. All renderings, floorplans and maps are artist's conceptions and are not intended to be an exact depiction of either the homes or landscaping.