

Centennial Crossing

The Whitman

2,600 SF

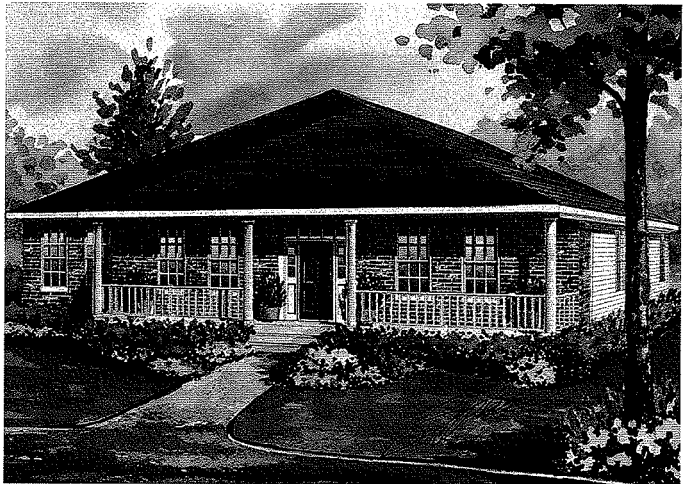
CRAFTSMAN
(Standard elevation)



COLONIAL REVIVAL



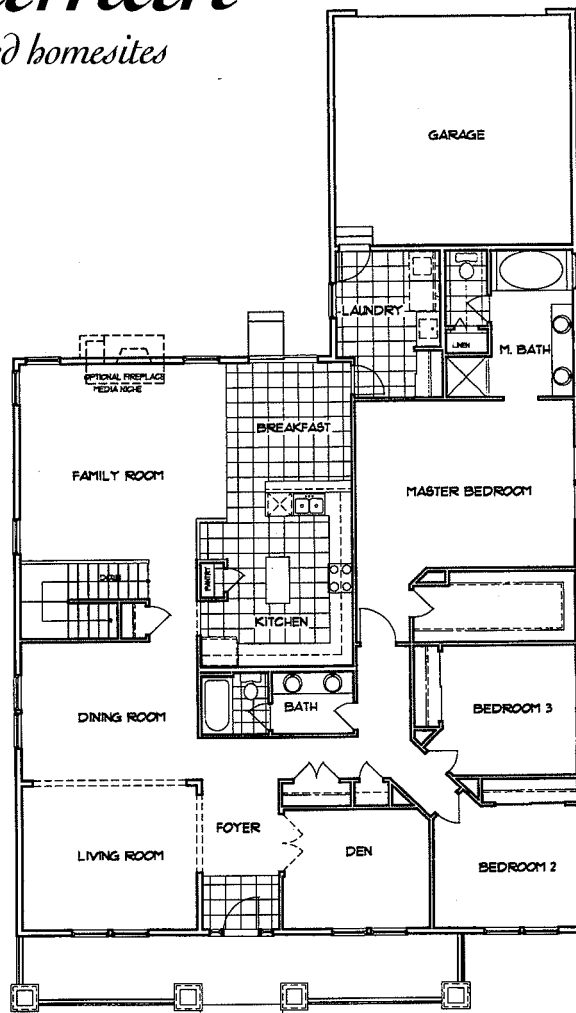
CLASSICAL



Centennial Crossing

The Whitman

2,600 SF • 6' alley-loaded homesites



A ranch-style home featuring three bedrooms plus den or fourth bedroom, two full baths, partial basement, and attached alley-loaded two-car garage.

Features

- Front entry foyer
- Living room
- Dining room
- Kitchen with island counter, breakfast nook and pantry
- Family room
- Den with optional double-door entry
- 9' first floor ceilings

- Master suite with ultra bath and oversize walk-in closet
- Two additional bedrooms
- Full hall bath with double-bowl vanity, private tub and water closet
- Hall linen closet
- Laundry room with closet

Optional Features

- Gourmet kitchen
- Family room fireplace
- Family room fireplace with built-in media niche
- Guest bedroom (in lieu of den)
- Master bedroom volume ceiling (per elevation)
- Full and finished basement options

In an effort to continuously improve our product, Town & Country Homes reserves the right to change floorplans and elevation specifications when necessary. All renderings, floorplans and maps are artist's conceptions and are not intended to be an exact depiction of either the homes or landscaping.